

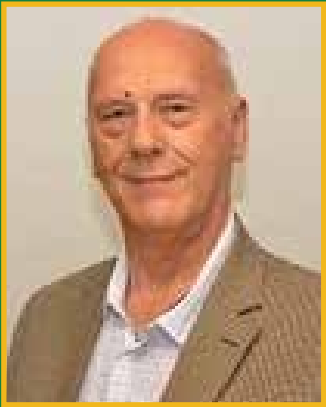


Stratton Parish News

SUMMER 2023 - ISSUE 006

Serving the Community

In This Issue..



**Introducing your
new Chairman**
Page 2



**Meadowcroft Skate
Park!**
Page 18



A Welcome from your Chairman

As this year's Parish Chairman I would like to introduce myself and tell you how I see the Parish moving forward this year. I have served on Stratton Parish Council for 10 years, the last four as Vice Chair. My wife, Cllr Teresa Page, and I have lived in Stratton for 50 years and have never considered moving out of the Parish. We thought it to be a great place to raise a family and still hold that opinion.

As an organisation we have invested heavily in the young people of the Parish. Many of you have complemented the team on the new and cutting edge play equipment we have been installing in our Play Parks and this renovation program will continue. You will also be aware of our exciting new Skate Park which will open in July!

We have an excellent workforce managed by the Clerk who are responsible for the services the Council provides, from Open Spaces to the Beechcroft Library and the events that the Council hold. The newer members of the Stratton Team who run our Youth Service and co-ordinate all the activities we provide for our young parishioners. I am aware that we need to provide more services for our senior citizens and I will be discussing this with my fellow Councillors.

I am also determined that the Parish Precept will not be increased recklessly to fund vanity projects. We are proud that prudent housekeeping has enabled us to freeze the Precept for four consecutive years and although I cannot guarantee we will be able to do this again it is the ambition of every Councillor to do so.

Chairman Tim Page



Clerk and Proper Officer

Stratton St Margaret Parish Council serves a population of over 23,000 residents across 5 wards, meaning its one of the largest in the UK! The services the Council provides; Open Spaces, Democratic Services, Civic and Community Events, Library and Youth Provision. The SSMPC staff are led by the Clerk and Proper Officer of the Council and consists of Officers and supporting staff who hold necessary skills and qualifications to undertake their roles. The Clerk as "head of paid service" is responsible for the internal management of the organisation of the Council. Together with the Chair, the Clerk is the face of officialdom in the community and promoting the Council and its activities.

The Proper Officer of Parish and Town Councils is a role in statute which means the Council is not legal without one. The Clerk holds the responsibility of implementing the decisions & policies of the Council within the Scheme of Delegation and oversees the management of the Parish Council including the fulfilment of its legal & financial obligations. The Clerk reports to the Council and that is personified on a day to day basis by the Chairman, and the rest of the workforce reports into the Clerk via the internal staffing structure. Committees that the Clerk attends regularly: Full Council, Personnel, Open Spaces, Planning and Highways, Property, Youth, Finance and General Purposes.

Cllr Pam Adams

It is with a very heavy heart that we announce the loss of Councillor Pam Adams following the election in May.

A retired teacher, Cllr Adams was elected as a Swindon Borough Council Councillor for St Margaret and South Marston ward last year. Pam was coopted onto the Parish Council in January 2023 and in the May election was duly elected as a Parish Councillor in Lower Stratton.

On behalf of the Parish Council and the residents of Stratton St Margaret, we thank Pam for her service to the community and offer our deepest condolences to her family at this sad time. There was a minute's silence held in memory of Cllr Adams at the Annual Meeting of the Parish Council.



Local Councillors

Meet Your Council



Lower Coleview Ward

Cllr Bea Bright
e: cllrbeabright@strattonst
margaret.gov.uk



Lower Coleview Ward

Cllr Anne Brooker
e: cllrannebrooker@strattonst
margaret.gov.uk



Lower Stratton Ward

Cllr Laura Butcher
e: cllrlaurabutcher@strattonst
margaret.gov.uk



Lower Stratton Ward

Cllr Tom Butcher
e: cllrtombutcher@strattonst
margaret.gov.uk



Merton Ward

Cllr Claire Crilly
e: cllrclairecrilly@strattonstmar
garet.gov.uk



Coleview Ward

Cllr Jo Dilley
e: cllrjodilley@strattonstmar
garet.gov.uk



Lower Coleview Ward

Cllr Alison Foley
e: cllralisonfoley@strattonst
margaret.gov.uk



Upper Stratton Ward

Cllr Oladapo Ibitoye
e: cllroladapoibitoye@strattonst
margaret.gov.uk



Upper Stratton Ward

Cllr Ola Ibitoye
e: cllrolaibitoye@strattonst
margaret.gov.uk



Coleview Ward

Cllr Barrie Jennings
e: cllrbarriejennings@strattonst
margaret.gov.uk



Lower Stratton Ward

Cllr Zaman Chowdhury
e: cllrzamanchowdhury@strat-
tonstmargaret.gov.uk



Upper Stratton Ward

Cllr Andree Murphy
e: cllrandreemurphy@strattonst
margaret.gov.uk



Upper Stratton Ward

Cllr Teresa Page
e: cllrteresapage@strattonst
margaret.gov.uk



Upper Stratton Chairman

Chairman Tim Page
e: cllrtimpage@strattonst
margaret.gov.uk



Coleview Ward

Cllr Tate Pullen
e: cllrtatepullen@strattonstmar-
garet.gov.uk



Lower Stratton Ward

Cllr Zoe Smith
e: cllrzo smith@strattonst
margaret.gov.uk



Lower Stratton Ward

Cllr Roger Smith
e: cllrrogersmith@strattonst
margaret.gov.uk



Upper Stratton Ward

Cllr Ravi Venkatesh
e: cllrravivenkatesh@strattonst
margaret.gov.uk

The Parish Council is served by 18 Parish Councillors. We have 5 wards within the Parish, consisting of Lower Coleview, Coleview, Lower Stratton, Upper Stratton and Merton. As Parish Councillors these individuals represent the local community.

We would like to welcome the following new Councillors to the Parish Council: Bea Bright, Jo Dilley, Tate Pullen, Zaman Chowdhury, Zoe Smith and Ola Ibitoye.

PROPERTY

The property management committee have been busy the last couple of months developing and improving our services throughout the parish.

Meadowcroft Community Centre

A date for the old unused wall heaters removal has been agreed with a local contractor. We plan to brick up the outside and plaster the inside. As part of this project we plan on installing some bee bricks in the wall to encourage wild life and give a resting place for bees.

Grounds Depot

A storage room attached to the office is being converted into a shower room. Our Caretaker installed large plastic sheeting to the walls to keep costs to a minimum. While a plumber and electrician installed the shower and extractor fan.

This project was originally planned to be completed over the winter but was postponed. This project is now completed and our grounds team can enjoy a nice shower after they finished grave digging, grass mowing and hedge cutting (someone has to do it).

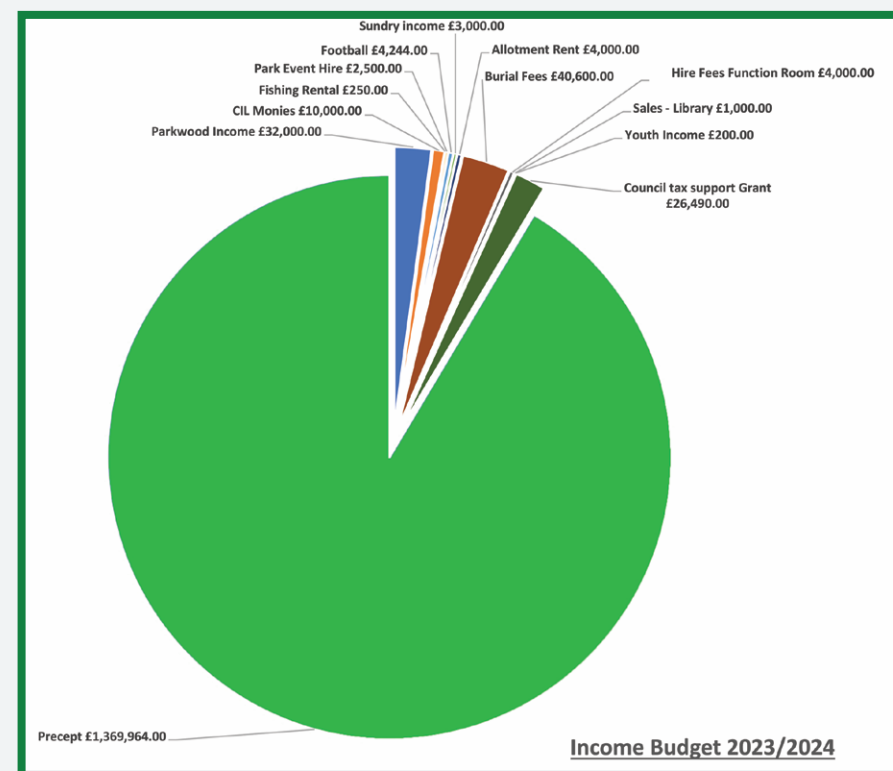


The Budget Process:

- Results in council setting the precept for the following year.
- Gives the Clerk/Officers overall authority to make spending commitments in line with the decisions of the council and financial regulations.
- Enables progress monitoring during the year by comparing spending against planned spending.

Parish councils are responsible for managing their own budgets. It is not lawful to set a precept unless a budget has been prepared and approved. Budgeting is a core function of the Council, RFO and Clerk and it is important to get it right to ensure you have enough funds for the next financial year. This money is used to improve facilities and services for local people. It shows plans for expenditure and also income other than the precept and is approved by full council at the January meeting. The council's financial year runs from 1 April-31 March.

The budgeted expenditure for 2023-2024 is £1,498,248.00. This is all the costs to manage our key areas which include Central Services, Open Spaces, Meadowcroft Community Centre, Beechcroft Library, St Phillips and White Hart Allotments, Green Road and Lower Stratton Cemeteries, our Youth Provision and Grant Aid.



The Parish Council receives the majority of its income through the precept; an annual sum of money collected with the Council Tax by Swindon Borough Council. The precept is set by the council in annum. The rest of the Council's income is from rental income, burial fees, grants, and CIL funding.

Every year in January, Stratton St Margaret Parish Council agrees its budget and sets "precept" for the forthcoming year at meeting of the Full Council. The precept is the element of the Council Tax which is raised and spent by Stratton St Margaret Parish Council to fund the services it provides. As a Parish Council, Stratton St Margaret Parish does not receive any funding from Central Government, nor does it receive any rates from local businesses.

PLANNING & HIGHWAYS

Although not a decision-making body, this committee meets regularly, once a month, to look at planning applications within Stratton Parish and comment on developments in our neighbouring parishes.

Parishioners are always welcome to attend and air their views and to observe our workings. The committee can 'call-in' to the Borough Council those plans it believes to be contentious. Committee members are kept informed concerning road works as it affects, or might affect, our local roads.

In 2019 the planning committee introduced a neighbourhood plan under

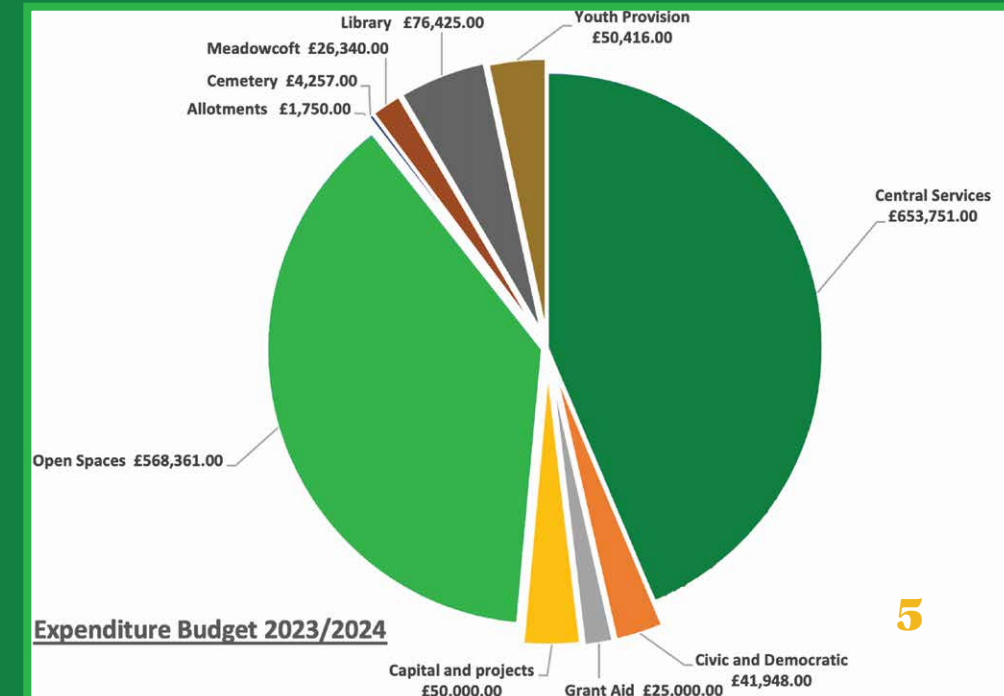
the Localism Act 2011.

The aim of this plan is to give communities the right to shape and develop their areas. The Stratton St Margaret neighbourhood plan has been prepared by residents and led by Stratton St Margaret Parish Council and shaped by various surveys and public consultations to accurately reflect the needs and wants of the community.



As you can see from the expenditure chart, the costliest area with 44% of overall expenditure is central services. This covers all the administration costs to run the Council such as insurance, legal fees, IT and telephones, website and social media, salaries, training, professional memberships and other necessary running costs.

As we are a public body spending public money and should be scrutinised carefully to make sure that it is being done properly. Therefore, we undergo both Internal Audit and External Audits every year.





Claridges Pond

May & June were scorcher months! Grass growth was stunted in the drought and hedge growth was fast. We reduced our mowing to accommodate this and began our priority hedges (around schools and pavements on busy roads), earlier than ever before.

We have spent extra time and money on our flower beds this spring and hopefully you have seen the benefit around the parish. Our basic work continues but our aim is to assist in making Stratton a beautiful place to live as well as somewhere that is clean, safe and functional.

We work alongside Swindon Borough Council to manage all the public services in the area and for more information on who does what, please refer to our website.

Wildflowers

SSMPC spends £120,000 annually mowing grass.

We want to provide acres of short grass for general recreation, dog walking, football, and overall good access but we also want to help flowers, birds and pollinating insects as well. This is where wildflowers prove to be beneficial, by providing somewhere for wildlife to live as well as cutting the councils time and costs on cutting grass. Finding that sweet spot between providing what people need (and pay for) and what wildlife deserves, is a tricky balance.

We have around 6 acres of wild flower land now (we added another acre this year). A few examples can be seen at Merton Fields, Meadowcroft Park, Greenbridge Recreation Ground, Dorcan Way and Covingham Drive.

One of the most important wild flowers is Yellow Rattle. It parasitizes on the roots of grasses and will literally feed from them directly. This kills off grass and creates opportunities for new flowers to germinate in the gaps. The species is known as the ‘meadow maker’! Every year we invest in new wild flower seed and purchase extra Yellow Rattle too.

We have noticed an increase in butterflies and birds on our land as a result of our wild flower areas! Anyone who wishes to contribute to formal records of nature on our land, should get in touch with our office.



Full Plot	3/4 Plot	Half Plot
Our largest plot available	Suitable for experts	Half of a full plot
£88 /per year	£66 /per year	£44 /per year
• 12 metres x 45 metres	• 12 metres x 45 metres	• 12 metres x 22 metres

Allotments

Last year we replaced 5 taps with water troughs at St. Philips and this winter we will be doing the same at White Hart.

Water troughs make water collection easier and quicker and birds can have a drink too. We spend around £550 annually on water for our allotments – about the same as an average house, despite the fact the water isn’t used at all during winter.

We have a share box at both sites where plot holders can leave any useful items for other tenants. It is good for recycling, upcycling, replacing and avoiding waste. We are proud of the stronger communities that we have helped to build at our sites, as well as the facilities we provide.

We have a 70% cultivation policy at both sites we encourage plot holders to help each other out if needed.

There are currently only 3 vacant plots over both sites which we are renting out to the next on the waiting list. There is always more to do and we always welcome feedback from our tenants.



Burials

In our two cemeteries our crucially important work continues in the same way it always has; to a high level. The foundation is set in our office with great administration running the services and the good work continues right through to the practical elements we deliver at our cemeteries. We continue to receive compliments from funeral directors and the public alike on the condition of our cemeteries. We take pride in our burial services and believe we deliver high quality, compassionate services that grieving families appreciate. In the last 12 months we have successfully delivered 22 full burials and 52 ashes burials. That total of 74 equates to a burial every 3.4 working days. This is one of the reasons we need a very well-resourced team.



Sub Committee

Youth



Meet your Youth Worker...

Cherry has served as a youth and community worker over the last 10 years in Wiltshire and Swindon. Cherry has ran youth centres, clubs and trips in the community and enjoys working with a diverse set of young people!



What have we been up to?



Things to look forward to...

Arts and Craft – we will be starting a paper mâché project of a large giraffe, which will be displayed at Beechcroft Library. This will also help to promote the youth provision.

Drama project – A six-week drama project will begin in August - September with a performance at the end shown at SSMPC hall.



Beach Trip – We are running a free trip to Bournemouth Beach in August for 20 young people.

Lazer Quest – Booked for the end of August, the venue in West Swindon is hired out completely to SSMPC. We will be playing lots of games over 2 hours and enjoying the arcade before the school season starts again in September.

Summer activities – In August we will be completing some fun summer activities in the parish... look out for further information to attend!



PGL Summer Trip

We are running a trip to PGL for young people who have volunteered with us, in the community. Young people will be invited to a free three-day multi-activity residential at PGL, as a reward for their participation & help to the local community. The 3 day residential will consist of loads of fun activities, building leadership skills, improving confidence and supporting young people's wellbeing. Activities range from: raft building, abseiling, kayaking, climbing, zip wiring etc.



Reptile Visit

In June we held a 'Tropical Discovery workshop' (reptile visit) where our Young people faced their fears and got up close and personal in an exciting opportunity to hold, feed and learn about various animals!

The visit included snakes, giant centipedes, lizards, scorpions, cockroaches and a tarantula.



Our newly opened Breakfast Club!

100's of people, parents and children, have attended our breakfast club since starting the sessions. Croissants, fruits, cereals, crumpets, toast, pancakes and pop tarts have been available. Swindon food bank donated 3 crates of cereals and 1 crate of pasta and rice. A number of children have been identified to skip meals or consume meals with little nutritional value due to financial difficulty within the family. We have become a referring centre for Swindon Foodbank, which will enable families and children to collect or be delivered essential food items. Tesco's have also kindly donated a £20 voucher.

Young Nature Photography Competition Winner



Daniel Hope, aged 12



Daniel Hope, aged 12, has won our young nature youth photography competition with his entry of a black bird. Daniel has won an Amazon voucher, a framed certificate and is invited to our free Summer PGL trip! As well as being featured on our newsletter front cover!

Additional Needs & Neurodiversity Club:

Our SEN group runs at Kingsdown Sports Centre every Wednesday at 6pm – 7pm for young people aged 10 – 25. We have lots of activities at this club and have been making mini sculptures, building Lego models, playing Nintendo Switch etc.



LGBTQ+ Club:

Many young people have joined LGBTQ+ club since starting in April. The purpose of this session has been to provide support and a safe space for young people, as well as educating them on LGBTQ+ in the community and history of the group. Activities during these sessions so far have included baking, collage making, tie dye, guest speakers from Out of The Can, discussing history etc. A local trip to Swindon Pride, will take place In August at Queen's Park.



Monday

7 - 8:30 AM
BREAKFAST CLUB
@ MEADOWCROFT CENTRE
*FOR PARENTS & CHILDREN
OF ALL SCHOOL AGES

Tuesday

3:30 - 5:30 PM
YOUTH CLUB (AGES 10-14)
@ MEADOWCROFT CENTRE
5:30 - 6:30 PM
OUT REACH SESSION
@ MEADOWCROFT

Wednesday

3:30 - 5:30 PM
LGBTQ+ CLUB (AGES 10-14)
@ MEADOWCROFT CENTRE
6 - 7 PM
NEURODIVERSITY/ADDITIONAL
NEEDS YOUTH CLUB
@KINGSDOWN SPORTS CENTRE
7 - 9 PM
EVENING STREET SESSION
@ MERTON

Thursday

3:30 - 5:30 PM
YOUTH CLUB (AGES 10-14)
@ MEADOWCROFT CENTRE
5:45 - 8 PM
OUT REACH SESSION
@ GRANGE/COLEVIEW



@SSMPCSWINDON



@SSMPCSWINDON

01793 823761
CHERRY.RILEY@STRATTONSTMARGARET.GOV.UK



Beechcroft Library

Beechcroft Library and Community Hub always welcomes everyone! We are a Warm Spaces Hub and now have free tea, coffee and squash in the library every day. Not only do we have a large selection of books and audio books and board games available to play in the library, we also run a wide selection of different activities each week

There's sure to be something here for you to enjoy! For more details on any of the library activities, please contact us on 01793 680030 or email us at: Beechcroft.library@strattonstmargaret.gov.uk

Did you know?

We now have an Allotment Group once a month on a Saturday!

This is open to all members of the local community to come along and enquire about owning an allotment. It will be a time to meet any current plot holders too, who can shed a light on what's great about growing on your own allotment plot! There will be tea, coffee and cake to enjoy! Follow our Facebook Page "Friends of Beechcroft Library" to find out when the next meeting is.

Did you know?

Beechcroft Library are holding free 30 minute 'Family Tree' sessions every Thursday!

Have you always wanted to find out more about your Family Tree? Time slots available are: 4.15pm, 5.15pm and 6.15pm. To book your slot, please contact Beechcroft Library on 01793 680030 or email beechcroft.library@strattonstmargaret.gov.uk

Did you know?

We have a Tea and Tech Group at Beechcroft Library every Wednesday from 2pm - 4pm?

Come along if you're interested in improving your confidence with smart phones, tablets and laptops. Everyone is welcome! Refreshments available.

Sheila & Vicky



Beechcroft Library is now open for longer! Our hours are now: Tuesday, Wednesday and Thursday: 10am - 7pm and Friday and Saturday: 10am - 5pm. Come and see what we have to offer.

Saturday 24 June from 10.30am
- our regular Lego Club will be taking place.

Saturday 24 June from 11am
- we have some Music Fun for children under 7.

Friday 7 July from 10am
- Citizens Advice will be visiting to give financial advice and support.

Saturday 8 July
- the Summer Reading Challenge launches. This year the Summer Reading Challenge is all about reading, sport and play. The Challenge is free to join for children ages 4-11, participants just need to be library members. To join, just call into any Swindon library with some ID such as a driving licence, council tax bill or utility bill or you can join online at www.swindon.gov.uk/.../libra.../298/join_the_library.

Events



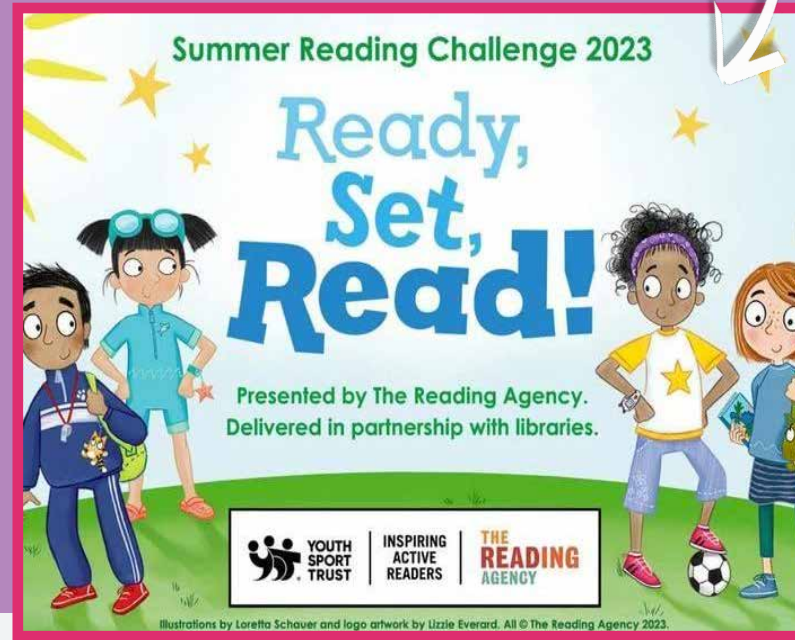
In line with the Summer Reading Challenge, we will be holding some children's activities, games and crafts during the summer holidays based on the theme of sport. We also have our regular Book Group on **6 July** and **3 August** as well as our friendly Bereavement Group on a Thursday afternoon (for more information or to join please contact the library). Follow our Facebook Page "Friends of Beechcroft Library" to find out more.

Volunteering

This is a great opportunity to develop your skills, work within a small team and get to know and support your local community!

The hours we are looking to fill are:
Wednesday - 4pm - 7pm,
Friday - 10am - 12pm,
Saturday - 12pm - 5pm.

If you would like to volunteer then please get in touch with Beechcroft Library by email at: beechcroft.library@strattonstmargaret.gov.uk or call us on 01793 680030



What's On?



What's on

Upcoming Events

Stratton St Margaret Parish Council hosts a variety of public events throughout the year ranging from festivals, to commemoration events.

Over the coming Summer months, we have an outdoor cinema evening, the Stratton Summer Festival and a car boot sale!

Friday 7th July - Financial Advice Talk

Citizens Advice will be visiting Beechcroft Library on Friday 7 July between 10am and 12.30pm. Everyone is welcome, no need to book.

Saturday 15th July - Stratton Festival

Roll up to Stratton Festival for our local community, on the 15th of July 12-5pm at Meadowcroft. There'll be food, drinks, live music and much more for all of the family to enjoy!

Sunday 30th July - Car Boot Sale

Need a clear out? Come down to Meadowcroft from 8am on Sunday the 30th of July for a community car boot sale.

Saturday 19th August - Open Air Cinema

Grange Leisure at 7pm, Horizon Experiences will be showing 'The Greatest Showman' on an outdoor cinema screen. Bring your friends and family to enjoy this free event.



The Parish Council has a mascot, Derrek the Dragon! You may have noticed that on our logo we have a green dragon, well he has now come to life!

You may see Derrek from time to time in the Parish and at our Events, most recently he was seen in Meadowcroft Park promoting the recent Sky Dive for the Chairmans Charity and doing a story time at Beechcroft Library!

Meet Derrek the Dragon!



Beechcroft Library

ADVICE & FINANCIAL FIRST AID TALK

CITIZENS ADVICE

Our project's primary aim is to give people the tools and advice to increase income and give them the knowledge and confidence to manage their money.

We are helping clients with:

- Increasing income through unclaimed benefits or grants
- Reducing monthly outgoings/debts through social tariffs
- Budgeting advice

Friday 7 July
10am - 12.30pm

All are welcome!



@ssmpcswindon

Meadowcroft Field
SN2 7JX

Car Boot Sale

8am - 12pm Sunday 30th July

£15

Per Pitch

01793 823 761 info@strattonstmargaret.gov.uk
Meadowcroft Community Centre, Addison Crescent,
Swindon, SN2 7JX

Come Along to Stratton St Margaret Parish Councils



Stratton Festival

For Our Local Community! - Coronation Edition

Saturday 15th July 2023

Meadowcroft
Community
Centre and Field.

12:00 pm - 17:00 pm



Royal Themed
Fancy Dress Competition

Food, Beer Tent, Arts & Crafts Stalls,
Live Music, Fun Fair and Much More!



OPEN AIR CINEMA

AT GRANGE
LEISURE
CENTRE
SN3 4JY



19TH
AUG

7PM

Come Along to Stratton St Margaret Parish Councils



Stratton Festival

For Our Local Community - Coronation Edition!

Saturday 15th July 2023



Fun Fair



Chainsaw Carving

Meadowcroft Community

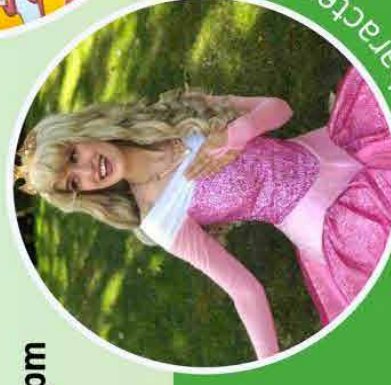
Centre and Field.

12:00 pm - 17:00 pm

Royal Themed

Fancy Dress Competition

Food, Beer Tent, Arts & Crafts Stalls,
Live Music, Fun Fair and Much More!



Disney Characters



Inflatables



Stratton Festival Map!

Outside Stall Plots:

- 1 - Charlotte Howell
- 2 - Sugar Shack
- 3 - Trinity Life Church
- 4 - Swindon Scouts
- 5 - Swindon Tiny But Mighty
- 6 - Emmely Axen
- 7 - Swindon Sands
- 8 - Swing Out Swindon
- 9 - Prospect Hospice
- 10 - Stratton St Margaret Parish Council
- 11 - MJA Mae Ferguson
- 12 - Farrell School of Dance
- 13 - Beechcroft Library
- 14 - Stratton History Stall
- 15 - SWWFL Wildlife Trust
- 16 - Richard James
- 17 - Catriona Sanderson Fundraiser
- 18 - Kirsty Darbourn-Knox
- 19 - Emmely Axen
- 20 - Natasha Rose Bennett



Princesses & Characters

Climbing Wall



Greek Graze



Grounds Team



Birds Of Prey



Fire Engine



Additional parking/Entrance



Attlee Crescent



Addison Crescent

Inside Stalls:

- 1 - Alice Turnham
- 2 - Local Bee Keepers
- 3 - Rachael McCusker
- 4 - Bharati Wall
- 5 - Cotsworld Sewing Creations
- 6 - Annabel Titcombe
- 7 - Zoe Gammon
- 8 - Lorraine Hobbs
- 9 - Fudge Bomb Creations
- 10 - Mamas Sweet Treats & Fudge

Parking/Entrance

Craft Fair



Inside Meadowcroft Community Centre



Stratton St Margaret Parish Council



Axe Throwing



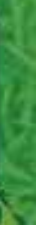
Chainsaw Carving



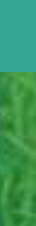
Dog Show By Drove Pets



Stratton Juniors



Court Area



Skate Park



Opening!



Play Park



Parish Developments



We have recently hired a contractor to install further playground markings at 3 of our parks.

Delamare Drive, Merton Fields and Meadowcroft park received some of the colourful, fun and educational play markings. Here are some pics showing some of them.

We hope these additions will be enjoyed by all for years to come!

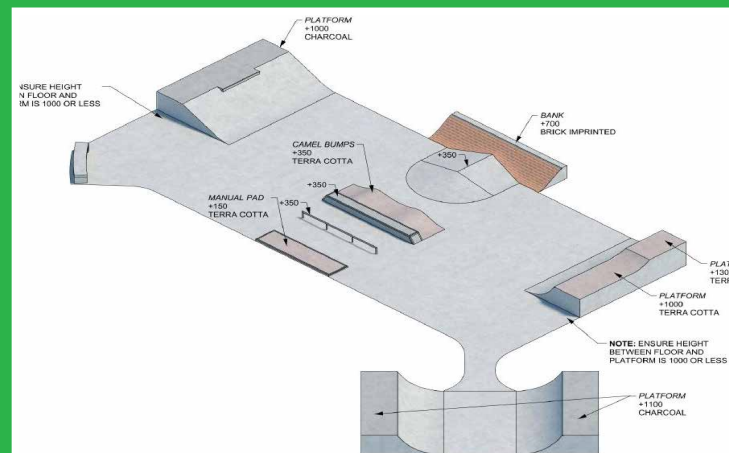
MEADOWCROFT SKATEPARK

This project has been huge to get from idea to delivery. In 2017 we met with local residents to discuss the idea of a skate park. From there we consulted with residents many times and in many different forms to ensure we understood the needs of those in favour and the concerns of those against. Concerns were extremely valid and we have worked hard to rule-out potential issues.

We have learnt from the experiences of other councils in the area as well as privately owned skate parks, experienced riders and also from the police, to ensure we have a well thought out design concept and location.

We obtained 5 different quotes and designs and the project was agreed by our council in autumn 2022. We have raised the cash for the £113,150 project through a £9,000 grant, money from housing development locally and by saving.

Construction began on 5th June and completion is due by 14th July. This facility will be very popular and our maintenance will match it's needs.



NHS Honourary Bench

We have recently installed a key worker bench on Meadowcroft field to commemorate all key workers that worked during the Covid-19 pandemic. All staff at the parish would like to thank all key workers for their hard work.



Letters to Heaven

We recently purchased a 'Letters to Heaven' post box which is located at our cemetery in Lower Stratton. The concept is to help grieving individuals whether they are children or adults and allow them to write a letter to their late loved ones and post it in the letter box.



Greenbridge Underpass

A mural dedicated to Stratton, past and present, is due to be painted onto the Greenbridge Underpass soon. Not only will this brighten the area but it will also educate about the history of our local area!



Delamere Drive play park upgrade

On 19th June, work began to renovate the children's play area on Delamere Drive. Over the last 3 years we have closely monitored your feedback on this park and the new makeover attempts to deliver what residents have requested.

At a total cost of £75,000, the play area will be condensed, fenced and lots more equipment added for both toddlers, juniors and children with disabilities. Our two contractors have the experience to make delivery straightforward for us. We are proud to invest in our youth, the adults of tomorrow.



Beechcroft Library Renovation Project

In an ongoing project, Beechcroft Library has recieved investment to help renovate the building, improve our community hub and utilise this public space.

In the recent months we have provided new artwork, stair banister upgrades, new flooring on the landing and upstairs rooms and a new cupboard under the stairs. Soon the doors from the lobby to the main library are due to be upgraded to increase accessibility for all.

The cupboard under the stairs has been built in line with the new light. It now fills the void space from the lift and the stairs.

The stair banister was modified to reduce the gap between each bar for safety regulations in line with current legislation.

The back room of the library had filtered water machine installed. This has been a great hit with users, staff and volunteers.



Before



After

Available for
hire!



Opening Times

Monday – Closed
Tuesday 10am – 7pm
Wednesday 10am – 7pm
Thursday 10am – 7pm
Friday 10am – 5pm
Saturday 10am – 5pm
Sunday: Closed
Bank Holidays: Closed

Contact Us

Email:
beechcroft.library@strattonstmargaret.gov.uk
Phone:
(01793) 680030
Address:
Beechcroft Road
Upper Stratton
Swindon, SN2 7QQ

Local News

SSMPC Sky Dive!



Stratton St Margaret Parish Council employees take on a 10,000ft skydive!

Each year our Chairman at Stratton St Margaret Parish Council chooses a local charity for us to raise money on behalf of. This year we will be raising funds for Prospect Hospice!

Last year we raised over £3,500 for Swindon Young carers. Usually we hold an annual summer festival, coffee mornings, car boots sales and a Christmas Carol service to help raise the funds.

However this year we want to raise even more for our new charity! So 5 brave staff members threw themselves out of a plane! They completed a 10,000ft tandem skydive on 10th June, across the Salisbury plains.

Thank you to everyone for your kind and generous donations for this amazing cause. We have raised £1,500!

Donations are still open if you would like to contribute! please follow - gofund.me/cad2fd07



Prospect Hospice

together making every day count

Since 1980, Prospect Hospice has provided dedicated end-of-life care to local people around the clock, every day of the year. The charity provides a range of services to support around 1,800 people each year to live independently for as long as possible and cares for people in their own homes as well as in the hospice based in Wroughton.

Care goes beyond providing a nice setting for people to spend their last days and extends to support services including; therapy support and family support to help with bereavement. All care is tailored to the patient, asking them what matters to them, to ensure care is truly personalised.

All of this is provided free of charge, with no cost to patients or their families, thanks to the generous donations of local people, helping to raise £8million each year!

If you are interested supporting Prospect Hospice by fundraising, or would like to know more, please contact our fundraising team by emailing fundraising&events@prospect-hospice.net or calling 01793 816161.

Local News

Stratton Police

Officers from the Stratton, North Central and West Swindon have been out with metal detectors at local hotspots looking for discarded Weapons as a preventative measure as part of Op Sceptre.

If you see anything suspicious, please contact us on 101 and please speak to us when you see us out on patrols.

By now you would have likely all heard about the incident on Meadowcroft playing fields on the 8th of June. We have been out speaking to the local community and we understand the concerns amongst you all.



In the aftermath of this incident we implemented some immediate measures to help the Stratton Community bounce back, this included reassurance patrols, house to house and the authority of S60 Stop and Search powers, whilst the S60 powers have now expired, the reassurance patrols are continuing.

We will be working with our partner agencies, which include the parish council in order to work on designing out crime and antisocial behaviour in the Stratton area.



SSPMC - Security in the Parish

Meadowcroft:

A defib will be fitted to the outside of the building so all can access this. We have been donated a Major Bleed Kit from Owens World and this is due to be installed at Meadowcroft also, we thank Owens World for this generous donation.

We are currently in discussion with Wiltshire Police about placing a knife amnesty box at the Meadowcroft site. A Knife Amnesty Bin is specifically designed to offer maximum safety and encouragement for the surrender of knives, blades and other harmful weapons.

Beechcroft Library:

The Library already has a defib, however we have installed a Major Bleed Kit here as well. We can utilise the existing defib cabinet for this making the installation cheaper.

Grange Leisure:

Grange Leisure has a defib on the inside of the facility and we will be installing a Bleed Kit on the outside of the building shortly.

SSMPC are keen to support the Community and are working with the Police on delivering the below for our residents.

- Engagement and drop in sessions for residents
- Police Youth Club engagement and attendance
- Holding a Safe and Green day (where Police walk around the Parish with Officers to look at bushes/lighting & paths to ensure clear line of sight as a deterrent)
- Increased Police patrols in the area
- Installation of a knife amnesty bin

We would like to make Stratton St Margaret a safe place for everyone.

Local News

GRANGE LEISURE AND COMMUNITY CENTRE

Our friendly and welcoming gym is the perfect place to get fit. It offers modern equipment, and our staff are always on hand to help.

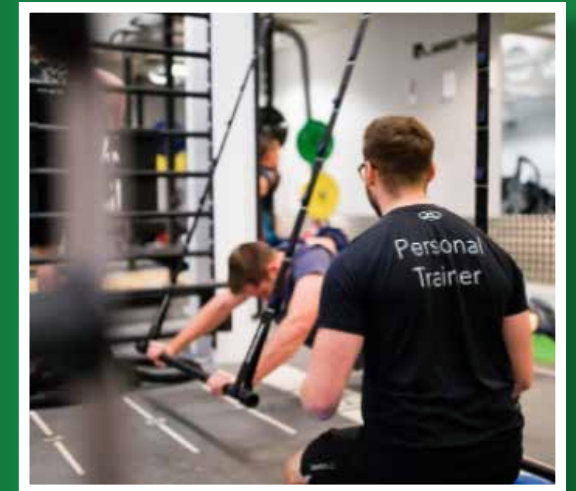
Whether you're a seasoned gym goer or just starting out, we realise it can be daunting coming to a new place to exercise. Our gym staff & PTs are there to help you, show you new routines and give a full induction on how to use the equipment.

Where do I start?

When you're using the gym, there are a number of different ways you can exercise. Whether it's using the range of equipment for a full body workout or targeting specific areas of your body each session, planning your routine is essential. If you're unsure on where to start, reach out to one of our personal trainers who will be happy to help you get up and running.

We have personal trainers that work within the gym, please ask them if you'd like a 6 week program, induction, program review or to talk about arranging individual or couples personal training sessions.

Call us on 01793 825525 to find out more.



Personal Training

LEISURE CENTRE

TRY US TODAY 3 DAY PASS

To receive your free pass, head to LeisureCentre.com/TryUs

- Excellent local communities
- Free use of facilities
- Gym Access
- Classes

YOU CAN ALSO
ACTIVATE THE
PASS FROM
THE APP

LeisureCentre.com

GRANGE LEISURE AND COMMUNITY CENTRE

WE'RE MORE THAN JUST A GYM

Our memberships include:

- 50+ Station Gym
- Dedicated Spin Studio
- 55+ Classes per week
- Juniors 10+
- Senior members
- Free Walking Club
- Free Soft Play
- Cafe
- Weddings/ Party Venue
- AGP pitch
- Free parking

Ask at reception for further details

01793 825525
GRANGE LEISURE AND
COMMUNITY CENTRE
Grange Drive, Stratton St: Margaret,
Swindon SN3 4JY

LeisureCentre.com

LEX LEISURE

Summer Activities



S	R	L	B	A	R	B	E	C	U	E	I	A	T
T	R	U	L	U	R	Y	U	Y	M	S	E	A	R
S	U	N	G	L	A	S	S	E	S	T	O	E	A
R	N	L	F	D	C	A	E	D	A	A	H	F	V
S	D	E	I	F	L	O	W	E	R	S	C	E	E
I	U	L	N	A	A	P	I	C	C	N	A	B	L
S	O	M	B	I	S	A	N	D	B	H	E	U	L
H	S	R	M	A	H	P	I	E	D	E	B	I	L
S	C	D	N	E	A	S	U	R	F	I	N	G	E
L	R	D	A	A	R	W	N	T	W	H	H	T	H
R	E	R	T	A	E	C	E	U	L	C	M	O	S
E	S	I	D	A	R	A	P	I	S	V	S	H	O
U	I	C	E	C	R	E	A	M	S	W	I	M	F
Y	N	I	P	I	C	N	I	C	A	A	C	F	R

HOLIDAY
SURFING
SUNSHINE
PARADISE
SHELL
SAND
BARBECUE
SUMMER
BEACH
TAN
SWIM
PICNIC
FLOWERS
SUNGLASSES
ICECREAM
TRAVEL
SEA
HOT

FAQ's

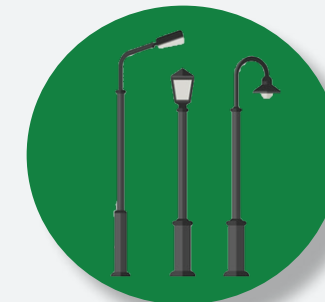


Can you cut the grass outside my house?

SSMPC mow all of the grass on the land we own every 3 weeks from March to October. Please get in touch to find out if the grass is our responsibility.

Can you fix the broken street light on my road?

Swindon Borough Council is responsible for all of the lighting across Swindon. Head to their website to report a faulty or damaged light (swindon.gov.uk)



What time does the Youth Club run?

Our Youth Club is on Tuesday, Wednesday and Thursday evenings as well as our new breakfast club on a Monday morning (see page 11 for more info).

Who makes the decision on my grant application?

All grant applications are taken to a full council meeting where councillors vote to make a decision.



How do i get added to the allotment waiting list?

Please email us at info@strattonstmargaret.gov.uk with your name, address, contact details and preferred allotment site.

Can I buy a grave in Stratton?

SSMPC owns 2 cemetery sites, Green Road and St Margarets. You must live within the parish boundaries to purchase a plot as grave spaces are limited and residents take priority.



SWINDON
105.5

daring to be different

Did you know?

The parish church of St Margaret dates back to the 13th century, with many later additions, including partial rebuilding in the middle of the 19th century.

Arkell's was established by John Arkell 180 years ago and is Swindon's oldest business, remaining a family business handed down through the generations- in Upper Stratton!

SSMPC is now on Radio! With a regular slot every second monday of the month. Tune in to 105.5 to hear more!...

Stratton derives its name from the Latin, strata (meaning a paved way or street) after the Roman road which runs straight through the parish from south east to north west.

In the past, the people of Stratton were commonly known as 'crocodiles'. The name came from a local story that some Stratton men once armed themselves against a supposed crocodile found at the side of a road.



2023 Meetings

Date	Event	Start
June		
7th	Youth	7pm
14th	Planning	7pm
28th	Property	7pm
July		
12th	Planning	7pm
19th	Finance	7pm
26th	Full Council	7pm
August		
2nd	Open Spaces	7pm
16th	Planning	7pm

Date	Event	Start
September		
6th	Youth	7pm
13th	Planning	7pm
27th	Full Council	7pm
October		
4th	Personnel	7pm
11th	Planning	7pm
18th	Finance	7pm
25th	Property	7pm
November		
8th	Open Spaces	7pm
22nd	Planning	7pm
29th	Full Council	7pm

Useful Numbers



Co-op Funeral Service	01793 539432
Hillier Funeral Service	01793 522797
Pearce Funeral Service	01793 832072
G&L Evans Funerals	01793 237852
Franklin Memorials	01793 766715
AE Smith Funerals	01793 237885
Kingsdown Crematorium	01793 822259

Beechcroft Library	01793 680030
BEST Trust	01793 200124
Community Centre	01793 823761
Drove Vets	01793 821821
Grange Leisure	01793 825525
Great Western Hospital	01793 604020
Merchiston Surgery	01793 823307
Open Spaces	01793 823761
SSM Womens Institute	01793 829900
St Margarets Church	01793 826505
Stratton Parish Council	01793 823761
Swindon Carers	01793 531133
Swindon Mind	01793 432031
Swindon Sexual Health	01793 604038
The Pest Controller	07557 023940

Beechcroft Infants	01793 823278
Colebrook Infants	01793 331960
Colebrook Junior	01793 823057
Grange Infants	01793 823278
Grange Junior	01793 823278
Kingsdown	01793 822284
Ruskin Junior	01793 332107
St Catherines Primary	01793 822699
St Lukes Academy	01793 705566
St Phillips Pre School	01793 705769



Local Contacts

ROOM TO HIRE AT - MEADOWCROFT COMMUNITY CENTRE

Private Booking= £15 per hour

Community Bookings= £12 per hour

01793 823761

info@strattonstmargaret.gov.uk

Addison Crescent, Upper Stratton, Swindon, SN2 7JX

ROOM TO HIRE AT - BEECHCROFT LIBRARY

Private Booking= £10 per hour

Community Bookings= £10 per hour

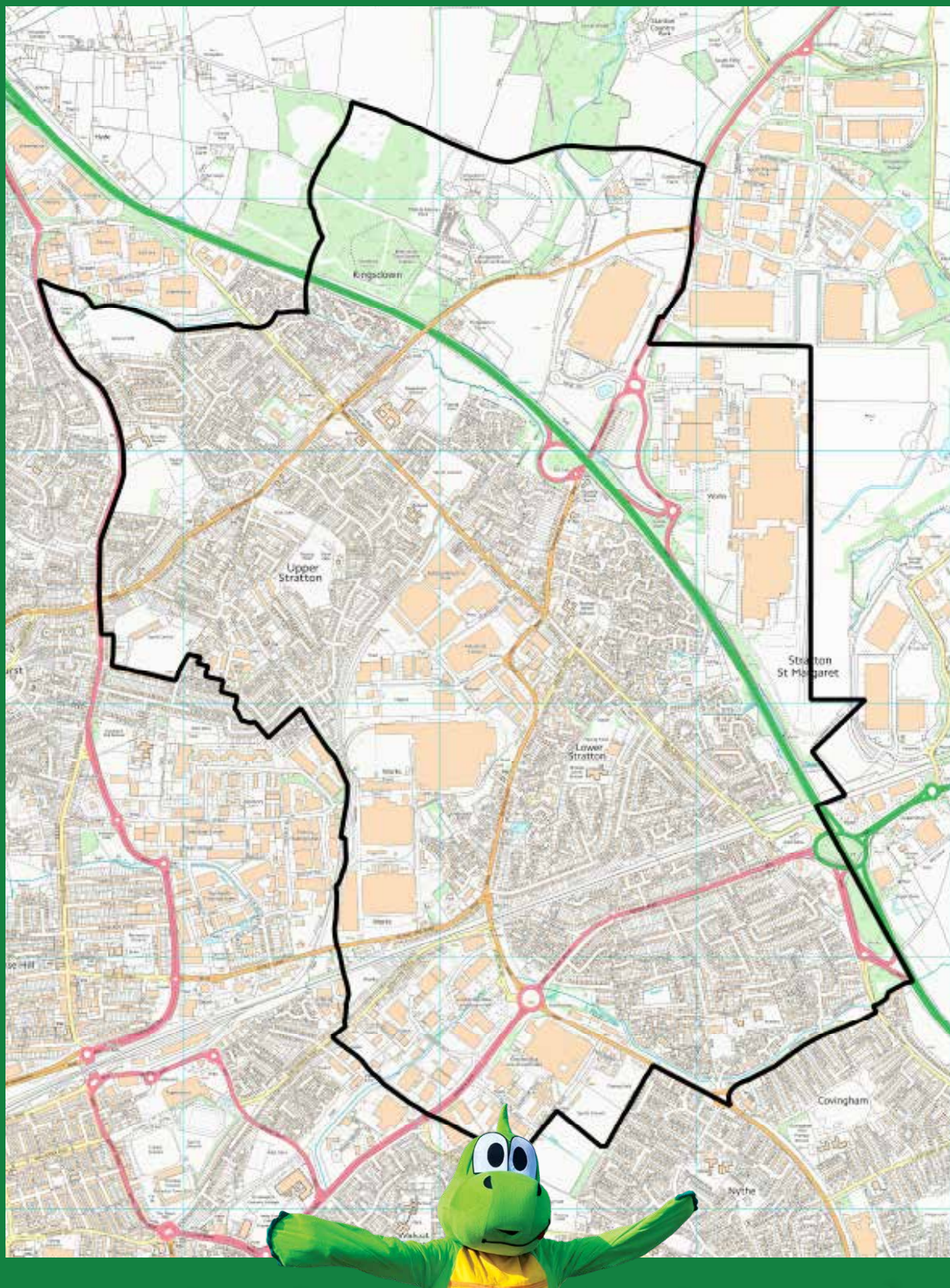
01793 680030

beechcroft.library@strattonstmargaret.gov.uk

Beechcroft Road, Upper Stratton, Swindon, SN2 7QQ



Stratton St Margaret
Parish Council



Serving the Community since 1894

SUMMER 2023 - ISSUE 006