

Stratton Parish News

AUTUMN 2023 - ISSUE 007

Serving the Community

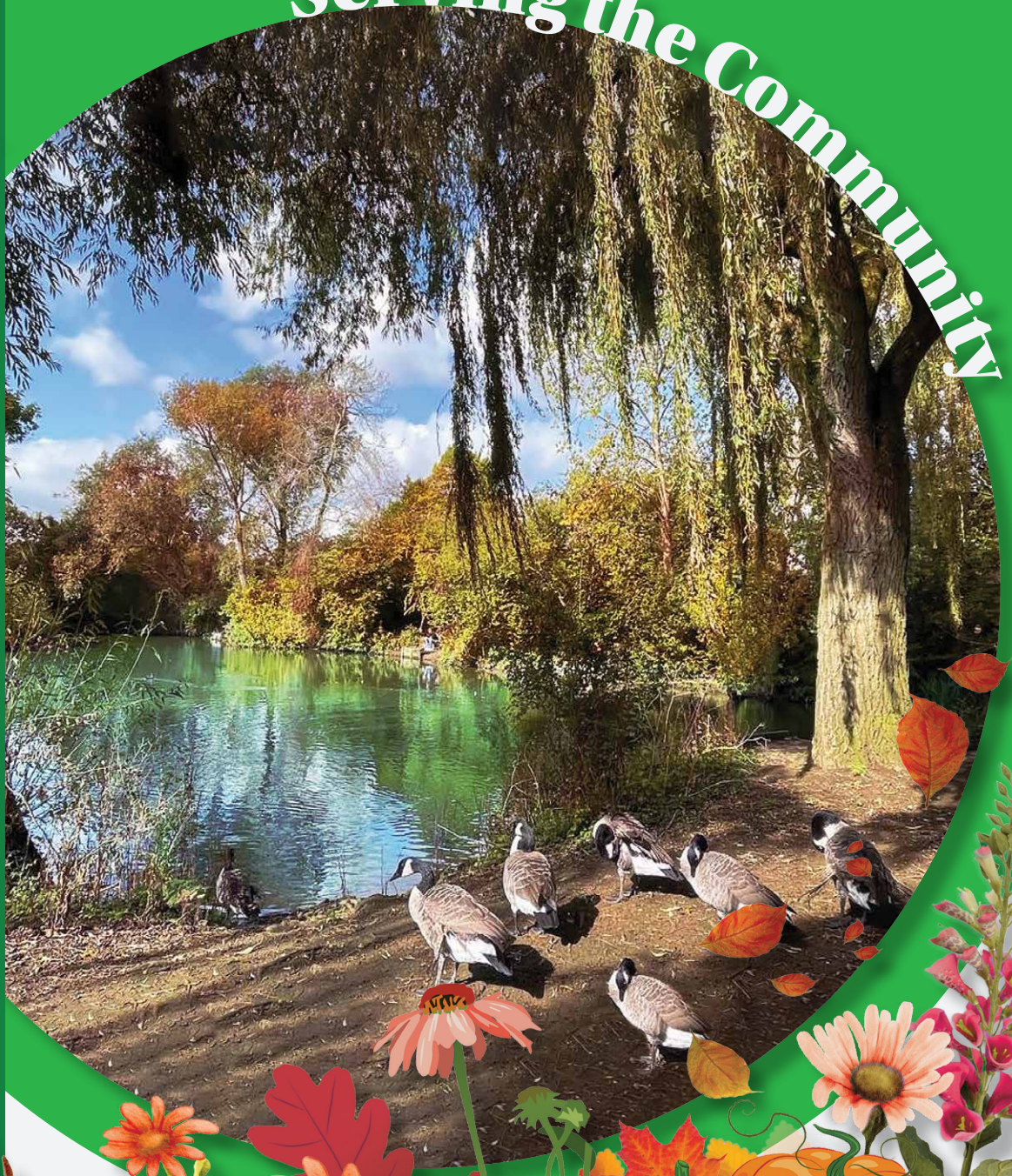
In This Issue..



**Youth Club PGL
Summer Trip!**
Page 9



**Meadowcroft Skate
Park!**
Page 18



In collaboration with Swindon Borough Council

The Parish Council would like to ask residents how they feel they could benefit from a closer working relationship between the Parish Council and Swindon Borough Council.

This includes sharing great experiences or difficulties you have had so we can voice these for you, it would be helpful if you send any constructive feedback you have on the services of Swindon Borough Council through your own experiences to enable us to represent you to work in future in a proactive and cohesive way.

Please send this feedback to info@strattonstmargaret.gov.uk by 30th October 2023.



Community Grants

Bi-annually (June & October) Stratton St Margaret Parish Council awards grants to local charities, organisations, projects and activities whose work in the community benefits residents of Stratton. With a budget totaling £25,000 each year, we hope to continue supporting and developing our community year after year..

In October 2022 we supported Stratton Methodist Church with a grant of £1,000 towards the repair of their external clock. In July this project was completed and we were very pleased to see photographs of the renovated and working clock. "Please pass on the thanks of Stratton Methodist Church Council to the Parish Council for their support for our clock refurbishment project. We are very grateful."

Grant application forms and further information can be found on the Parish Council website. Email finance@strattonstmargaret.gov.uk with your completed application form and supporting documents, or post it to the Parish council offices.

June 2023 Grants

Beechcroft Thursday Club - £500 plus free use of Meadowcroft Hall for 1 year

Friends of Farrell Dance school - £800 - Travel costs for dancers to travel to World Irish dance competition

St Philips Pre-school - £1,000 – Improvement of outside space and renovation works

SJFC - £2,000 – Upgrade of toilet facilities

Uplands Enterprise Trust - £1,000 – Starlight Theatre and SoundBeam 'touch free' musical device

Stratton Churchways Bowls Club - £500 – Enhancement of outside space

Prospect Hospice - £3,000 - Provision of nurse care in the homes of patients

STEP - £2,940 – Therapeutic Intervention programme – from A to C (Anxiety to Confidence)

Local Councillors

Meet Your Council



Lower Coleview Ward

Cllr Bea Bright
e: cllrbeabright@strattonstmargaret.gov.uk



Lower Coleview Ward

Cllr Anne Brooker
e: cllrannebrooker@strattonstmargaret.gov.uk



Lower Stratton Ward

Cllr Laura Butcher
e: cllrlaurabutcher@strattonstmargaret.gov.uk



Lower Stratton Ward

Cllr Tom Butcher
e: cllrtombutcher@strattonstmargaret.gov.uk



Lower Stratton Ward

Cllr Zaman Chowdhury
e: cllrzamanchowdhury@strattonstmargaret.gov.uk



Merton Ward

Cllr Claire Crilly
e: cllrclairecrilly@strattonstmargaret.gov.uk



Coleview Ward

Cllr Jo Dilley
e: cllrjodilley@strattonstmargaret.gov.uk



Lower Coleview Ward

Cllr Alison Foley
e: cllralisonfoley@strattonstmargaret.gov.uk



Upper Stratton Ward

Cllr Oladapo Ibitoye
e: cllroladapoibitoye@strattonstmargaret.gov.uk



Upper Stratton Ward

Cllr Ola Ibitoye
e: cllrolaibitoye@strattonstmargaret.gov.uk



Coleview Ward

Cllr Barrie Jennings
e: cllrbarri Jennings@strattonstmargaret.gov.uk



Lower Stratton Ward

Cllr Pratap Mane
e: cllrpratapmane@strattonstmargaret.gov.uk



Upper Stratton Ward

Cllr Andree Murphy
e: cllrandreemurphy@strattonstmargaret.gov.uk



Upper Stratton Ward

Cllr Teresa Page
e: cllrteresapage@strattonstmargaret.gov.uk



Upper Stratton Chairman

Chairman Tim Page
e: cllrtimpag@strattonstmargaret.gov.uk



Coleview Ward

Cllr Tate Pullen
e: cllrtatepullen@strattonstmargaret.gov.uk



Lower Stratton Ward

Cllr Roger Smith
e: cllrrogersmith@strattonstmargaret.gov.uk



Lower Stratton Ward

Cllr Zoe Smith
e: cllrzo Smith@strattonstmargaret.gov.uk



Upper Stratton Ward

Cllr Ravi Venkatesh
e: cllrravivenkatesh@strattonstmargaret.gov.uk



PROPERTY

The property management committee have been busy the last couple of months developing and improving our services throughout the parish.

Meadowcroft Community Centre

Stratton St Margaret Parish Council have recently installed solitary bee house bricks into our Parish building in Meadowcroft!

The bee brick provides a nesting space for Red Mason and Leafcutter Bees, amongst other cavity-nesting species! We've installed them to help the declining bee population.

Grounds Depot

In July Council resolved to installed solar energy at the Councils Grounds Depot. Each year by having solar panels the Council will reduce its carbon emissions by 4 tons or 77% for the building. Over the life time of the system this will be the same as planting an extra 829 trees or 92 long haul flights avoided!

The Council are committed to start generating energy that produces no greenhouse gas emissions from fossil fuels and reduces air pollution.



PLANNING & HIGHWAYS

Although not a decision-making body, this committee meets regularly, once a month, to look at planning applications within Stratton Parish and comment on developments in our neighbouring parishes.

Parishioners are always welcome to attend and air their views and to observe our workings. The committee can 'call-in' to the Borough Council those plans it believes to be contentious. Committee members are kept informed concerning road works as it affects, or might affect, our local roads.

In 2019 the planning committee introduced a neighbourhood plan under

the Localism Act 2011.

The aim of this plan is to give communities the right to shape and develop their areas. The Stratton St Margaret neighbourhood plan has been prepared by residents and led by Stratton St Margaret Parish Council and shaped by various surveys and public consultations to accurately reflect the needs and wants of the community.



Audits

We hold your money and you pay us via council tax to keep your spaces green and library open (among many other things) we therefore hold the responsibility for ensuring your money is well looked after, spent wisely and open to scrutiny. This is why we are audited.

We have recently successfully passed another Audit, which means taxpayers can be rest assured their money is in good hands and is being spent wisely!



FINANCE

“On the basis of our review of Sections 1 & 2 of the Annual Governance and Accountability Return (AGAR), in our opinion the information is in accordance with Proper Practices and no other matters have come to our attention giving cause for concern that relevant legislation and regulatory requirements have not been met”

Internal Audit

The Internal Audit is a wide governance check on the Parish's processes rather than just a check on the figures. The financial year runs from 1st April - 31st March. To ensure the auditor can have the opportunity to look at the processes throughout the whole year we appoint an auditor at the beginning of the year.

The internal auditor is an independent and competent person appointed by the council to carry out checks on its system of internal control. The independent internal auditor cannot be involved in any business of the council and cannot, therefore, be a serving member of the council. The internal auditor carries out tests focusing on areas of risk and after reporting to the council, signs a report on the annual return to confirm that the council's system of controls is in place and operating.

External Audit

The law requires another audit to be carried out so that local taxpayers can be assured that the risks to public money have been managed. These auditors review the Council's AGAR. The annual return is the principal means by which the Council is accountable to its tax payer. Councils must complete an annual return to confirm that everything is in order.

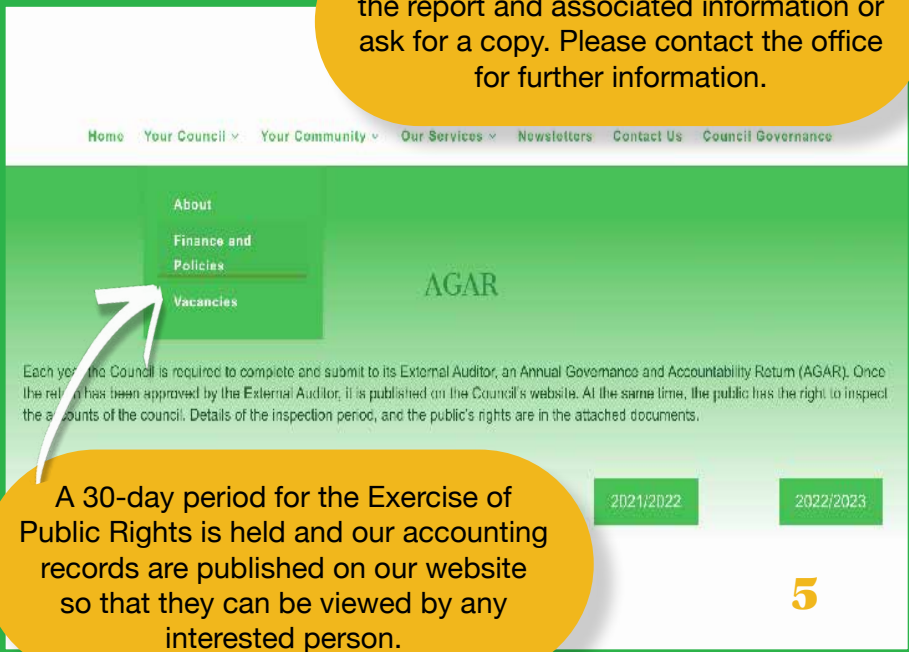
AGAR

AGAR a.k.a The Annual Governance and Accountability Return

AGAR has 3 main parts - Annual Governance Statement, Accounting Statements & Internal Audit Report.

The Council's Financial Regulations governing the internal and external auditing process are covered by the regulation issued under provisions of section 27 of the Audit Commission Act 1998. The Accounts and Audit Regulations 1995 set out requirements for local Councils in relation to audit and accounting practices.

Members of the public can ask to see the report and associated information or ask for a copy. Please contact the office for further information.





Stratton St Margaret Parish Council is very pleased to announce that we have recruited a new Senior Open Spaces Officer, Carl Smith, who will be joining us on 6 November 2023. Carl comes from a Local and District Council Grounds Team and Land Management background with a knowledge of managing Council land, teams and horticulture, he has experience in the complexities of cemetery management, contractors, health and safety and fleet machinery. I am sure you will join me in welcoming him to the Open Spaces Team.

Autumn Gardening Top Tip

Autumn is a special time of year for many gardeners. Allotments are brimming with fruit and veg and the soil in your garden will still be warm enough to plant spring bulbs, including daffodils, tulips and crocuses. Now is the time to get over to the allotment or vegetable patch to collect what you can from the last of the summer crop before the cold weather comes. Autumn crops such as apples, pears, squash and leeks should all be ready to start harvesting now.

Trees in our Parish

Healthy trees are an important part of this urban parish, whereby there is value in each and every one. The Parish Council does not have a policy for felling healthy trees unless they are unsafe to the public. We would like to preserve, protect and plant as many trees in our local area as possible.

For the biodiversity of the Parish, trees are an important factor of the green spaces around us, they are eaten by caterpillars of many moth species. They are very attractive to aphids, providing a source of food for their predators, including hoverflies, ladybirds and many species of bird.

Bees also drink the aphid honeydew deposited on the leaves. The flowers provide nectar and pollen for insects, particularly bees and if it is a fruit tree then the fruit is harvested by a variety of life! Long-lived trees provide dead wood for wood-boring beetles, and nesting holes for birds.

Allotments

“A beautiful early autumn’s afternoon, small white cloud drifting across the sky, a slight breeze with a red kite lazily in the thermals and the sound of waves breaking on the shore (it’s the traffic on the A419 but don’t spoil the illusion!) There is a late crop of peas ready for the pot, sweet corn to be harvested and a helping of late raspberries for afters. Bliss! The lack of air miles! You will know exactly how many chemicals you have used. (In my case, none) One other is picking tomatoes for freezing or saucing. Another is forking over the plot where his sweet peas were as another clears the rhubarb bed. Autumn on the allotment, the fulfilment of a season of planting nurturing and growing. The work of digging, hoeing, watering and weeding has been done and the rewards spreading my waist band. Coming on nicely are the leeks and brussels. The year is reaching full circle to begin again culminating in next year’s harvest. To have an allotment is a commitment, seeing the best and worst of the seasons at first hand and the deep camaraderie with your neighbours. Weeds always grow well; a hoe and mulching are your best weapons.” - Stuart Leach (allotment holder)



Full Plot Our largest plot available	3/4 Plot Suitable for experts	Half Plot Half of a full plot	Quarter Plot Our most popular size	1/6 Plot Perfect for beginners	1/8 Plot The smallest plot we currently offer
£88 /per year	£66 /per year	£44 /per year	£22 /per year	£16.50 /per year	£11 /per year
12 metres x 45 metres	12 metres x 45 metres	12 metres x 22 metres	6 metres x 22 metres	6 metres x 11 metres	6 metres x 11 metres

During the first week of September, a wonderful group of volunteers from Nationwide Swindon helped us cultivate some land at our St Phillips Allotment site, litter picked around Meadowcroft, painted our Youth room based at Meadowcroft Community Centre and fixed together some desks which will be placed within Beechcroft Library. A big thank you is due to all those involved, they did such a fantastic job!



Green Road Chapel

The parish council are currently gathering quotes to restore the Green Road Chapel back to its original interior by restoring the timber flooring as well as refurbishing the wall panelling and church seating. Recently we have had an increase in ashes interments at the cemetery and have been approached by a local church group who would like to use it for charitable art exhibitions and we hope to see this building utilised more, potentially even for burial services. The Governance Administrator has met multiple contractors and will take quotes to a council meeting.



Sub Committee

Youth



Meet your Youth Worker...

Cherry has served as a youth and community worker over the last 10 years in Wiltshire and Swindon. Cherry has ran youth centres, clubs and trips in the community and enjoys working with a diverse set of young people!



What have we been up to?



Activities have taken place both inside the community centre and outdoors on Meadowcroft field. SMASH ran a free session of inflatable football, where many young people took part and individuals using the skatepark were engaging with the games. Other outdoor activities have included, litter picking at Merton fields and Meadowcroft, bubble football, art's and crafts, temporary tattoos, summer BBQ, picnic, creating rock painting trails etc.

Other activities that have taken place in the youth room include: baking, clay modelling, 3D puzzles, crafts, karaoke etc. Each month there are various themes set with the activities for each session and materials purchased beforehand. The activities have been advertised on social media and around the community

Things to look forward to...

Arts and craft – The young people will be starting a paper mâché project of a large giraffe, which will be displayed at Beechcroft Library. This will also help to promote the youth provision.

Rock trail – A painted stone project took place during the additional need's session and youth club groups. The rocks have since been collected. Ideas of where to place these around the parish is welcomed.

Breakfast Club



Our largest session so far included 20 individuals. During the summer holidays, breakfast club changed to brunch club to allow more young people to attend. Waffles, fruits, cereals, crumpets, flatbreads and bacon/egg sandwiches were on the menu. Tesco's previously donated a £20 voucher for this club, which was spent on various breads and bacon that were frozen for future use. With school restarting in September, breakfast club will resume. Swindon food bank donated various cereals to support our delivery of this session. New people have joined with their parents and take part in litter picking after breakfast club between 12pm – 2pm.

PGL Summer Trip



On 28th July, 30 young people left Meadowcroft, to enjoy a 3-day adventure at PGL Liddington. After weeks of volunteering in the community, young people were rewarded with a multi-activity weekend.

The final cost was £3,069, minus tax, for 30 Children and 4 adults, inclusive of all meals. The activities decided were made to promote team-building, problem solving, confidence and leadership skills.

There was a wide variety of food choices through the day and evening which young people were able to decide from. Snacks (flapjack's, crisps etc) and drinks were purchased prior to the trip from Bookers' to keep their energy going throughout the activities.

During these 3 days, activities included: canoeing, giant swing, zipwire, abseiling, vertical challenge, aeroball, bush craft, campfire, archery tag, challenge course & survival skills.



After returning from the residential, all photographs were printed and given to young people with scrap books to create their own personalised memory books. Many young people have thanked youth workers for the trip and asked us to pass on their thanks to the council for allowing the trip to take place. As two office staff members joined the trip, the young people now have a closer relationship with the council and understand more about SSMPC as a whole.

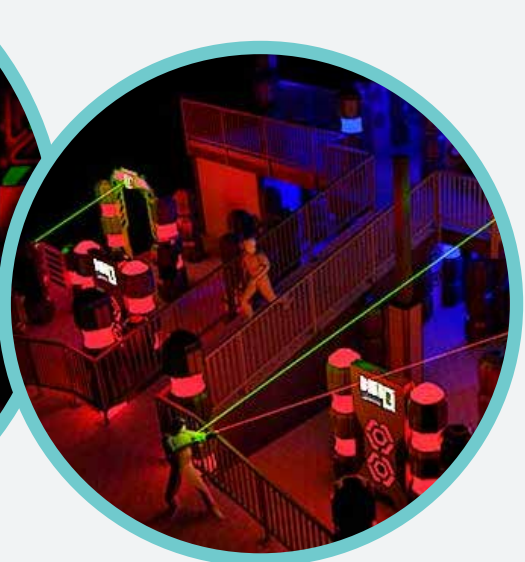
"Thank you so much, I love PGL"

"You are so fun, I had the best time"

"I loved being with my friends over-night and going canoing"

"Thank you, my favourite activity was the giant swing even though I cried"

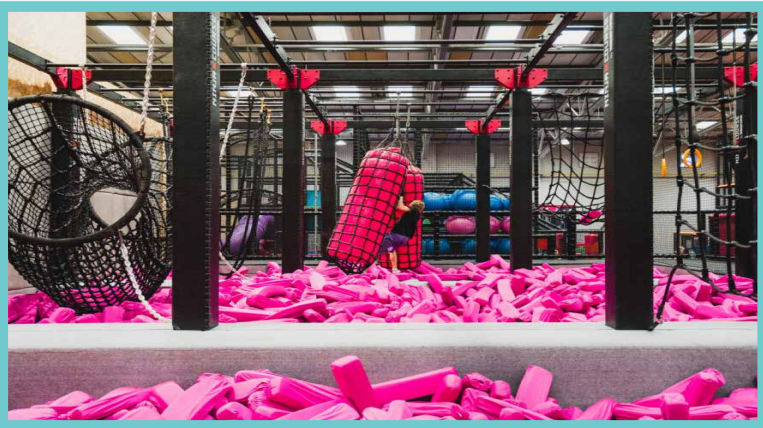
"I loved my first ever night away from my parents"



Laser Tag!

Laser quest in west Swindon was booked for the youth provision, in conjunction with the police as an engagement.

The activity was hired for Stratton young people only, to ensure safeguarding. 25 young people attended. 6 local police staff took part including PCSO's, PC's, sergeant and inspector.



Another Freedog booking was made for October half term. They have recently refurbished their building and removed the trampolines; replacing them with interactive activities and a ninja course. Young people with the most rewards will be given the opportunity to attend, as there are limited spaces.



Stratton Youth's

BAKE & CRAFT SALE

All proceeds will go to Prospect Hospice!

SATURDAY 28TH OCTOBER
12 - 2 PM

MEADOWCROFT COMMUNITY CENTRE







LGBTQ+ Club:

The purpose of this session has been to provide support and a safe space for young people, as well as educating them on LGBTQ+ in the community and history of the group. A local trip to Swindon Pride, took place in August at Queen's Park. Young people were given tickets during youth club to attend. SMASH and Out of the Can provided a quiet zone for young people and a place to charge their phones.

We had a visit from a Swindon drag queen who spoke to young people about LGBTQ+ issues and spoke about their family in America who are part of Ru Paul's Drag Race. Games were also played such as musical chairs, karaoke and a dance-off.

We also ran the free trip to Sandbanks beach for this session. This beach is lifeguarded and gave young people the opportunity to relax and have fun before school starts again.







WANT TO TRY SOME NEW & EXCITING ACTIVITIES?

DO YOU NEED SOMEWHERE TO CHAT TO A YOUTH WORKER?

Monday

7 - 8:30 AM
BREAKFAST CLUB
@ MEADOWCROFT CENTRE
*FOR PARENTS & CHILDREN OF ALL SCHOOL AGES

Tuesday

3:30 - 5:30 PM
YOUTH CLUB (AGES 10-14)
@ MEADOWCROFT CENTRE
5:30 - 6:30 PM
OUT REACH SESSION
@ MEADOWCROFT

Wednesday

3:30 - 5:30 PM
LGBTQ+ CLUB (AGES 10-14)
@ MEADOWCROFT CENTRE
6 - 7 PM
NEURODIVERSITY/ADDITIONAL NEEDS YOUTH CLUB
@MEADOWCROFT CENTRE
7 - 9 PM
EVENING STREET SESSION
@ MERTON

Thursday

3:30 - 5:30 PM
YOUTH CLUB (AGES 10-14)
@ MEADOWCROFT CENTRE
5:45 - 8 PM
OUT REACH SESSION
@ GRANGE/COLEVIEW

01793 823761
CHERRY.RILEY@STRATTONSTMARGARET.GOV.UK



@SSMPCSWINDON



@SSMPCSWINDON



Beechcroft Library

Beechcroft Library and Community Hub always welcomes everyone! We are a Warm Spaces Hub and now have free tea, coffee and squash in the library every day. Not only do we have a large selection of books and audio books and board games available to play in the library, we also run a wide selection of different activities each week

There's sure to be something here for you to enjoy! For more details on any of the library activities, please contact us on 01793 680030 or email us at: Beechcroft.library@strattonstmargaret.gov.uk

Did you know?

We have a Swindon Food Collective box in the library?

Swindon Food Collective aims to help people in Swindon, who are suffering from hardship and finding it difficult to provide food for themselves and their family. In the last 12 months, just over 11.5 tonnes of pasta, baby products and tinned food has been distributed!

Donations are always welcome during library opening hours.

Did you know?

Library members can access a huge variety of e-reads through the BorrowBox and Libby apps for free?! Visit www.borrowbox.com or www.overdrive.com for more details.

For those really keen readers, we also offer two Reserver subscriptions which are great value: £30.00 Super Reserver one year subscription.

Did you know?

In the past, the people of Stratton were commonly known as 'crocodiles'? The name came from a local story that Stratton men once armed themselves against a supposed crocodile found at the side of a road. It turned out to be a scarf!

Come and check out our new crocodile bookstand in the children's area at Beechcroft Library complete with seating!

Librarians Sheila & Vicky



Beechcroft Library is open for longer! Our hours are now: Tuesday, Wednesday and Thursday: 10am – 7pm and Friday and Saturday: 10am – 5pm. Come and see what we have to offer.

During half term for Halloween from October 23rd we will be hosting children's activities and crafts in the library, including a spooky Treasure Hunt and a pumpkin carving competition! Follow our Facebook Page "Friends of Beechcroft Library" to find out more. Did you also know Beechcroft Library have a Toddler Story Time every Thursday from 10.30am, as well as a Saturday Story Time on the first and third Saturday of the month from 11am? These sessions are all free and suitable for age 7 and under.

Looking for ideas for your child's birthday party?

Beechcroft Library are now doing Lego party packages! 2 hours room hire with unlimited squash and includes 18 party invites, all for £50. For more information or to arrange a booking, please contact us on: 01793 680030 or at: beechcroft.library@strattonstmargaret.gov.uk

LEGO PARTY!

CHILDRENS BIRTHDAY PARTY PACKAGE AT BEECHCROFT LIBRARY!

2 HOURS HIRE!

LOTS OF LEGO TO ENJOY WITH UNLIMITED SQUASH!

FOR MORE INFO PLEASE CONTACT US AT:

01793 680030
BEECHCROFT.LIBRARY@STRATTONSTMARGARET.GOV.UK

INCLUDES 18 PARTY INVITES!

ALL THIS FOR £50!



If you have any leftover wool to spare, the Knit and Natter Group at Beechcroft Library would be very grateful! Our Knit, Sew & Natter Group meet every Friday from 11am to 12.30pm, this free group is for all who enjoy knitting or cross stitching and having a chat.



What's On?



Events



Stratton St Margaret Parish Council

PUBLIC ENGAGEMENT SESSION

EVERY 1ST TUESDAY OF EACH MONTH (STARTING NOVEMBER 7TH) 6PM TO 7PM AT BEECHCROFT LIBRARY

This session is an opportunity to meet your local Council representative, let them know what is important to you in the area, what changes you would like to see or concerns you have and how they can best represent you as residents in Stratton St Margaret.



On occasion there'll be a representative from Wiltshire Police in attendance, if you have any concerns you wish to discuss with them.

For more info please contact us at:

Volunteering

This is a great opportunity to develop your skills, work within a small team and get to know and support your local community!

Available hours include:
Wednesday - 4pm – 7pm,
Saturday - 1pm – 3pm,
Saturday - 3pm – 5pm.

If you would like to volunteer then please get in touch with Beechcroft Library by email at: beechcroft.library@strattonstmargaret.gov.uk or call us on 01793 680030

Beechcroft Food Bank

SWINDON FOOD COLLECTIVE

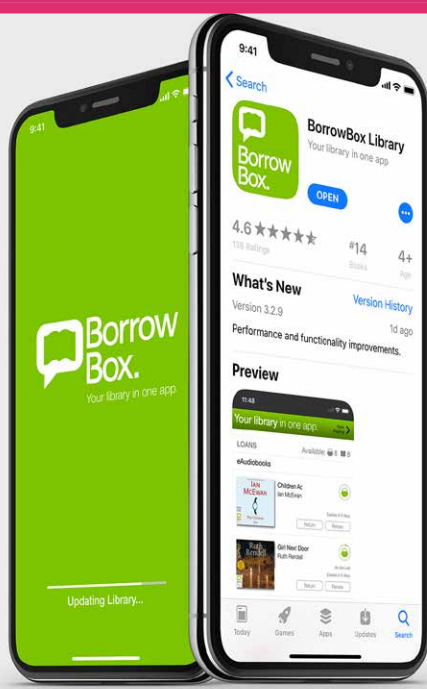
Take action to fight food poverty in Swindon

Items Needed in Oct/Nov:

- Paxo Stuffing
- Packets of Custard Mix
- Small Sized Christmas Puddings
- Small Jars of Cranberry Sauce
- Small Packets of Crackers for Cheese (not large boxes)
- Chocolate Coins/Small Selection Boxes
- Packets of Biscuits (not boxes)
- Small Jars of Nutella
- Peanut Butter
- Small Bags of Sugar
- Medium Jars of Coffee
- Bottles of Squash
- Cartons of Long Life Juice
- Tins of Meat
- Jars of Paste for Sandwiches
- Potato and Fruit Tins
- Small Jars of Pickles

every contribution is hugely valued

thank you!



October Activities at Beechcroft Library

Thurs 5th 13:30pm - 15:30pm - Beechcroft Book Club

Tues 3rd-Sat 7th - Green Libraries Week

Thurs 5th 10:30am - 14:00pm - Healthwatch Cancer Info & Support

Sat 7th 10:30am - 13:30pm - Macmillan Annual Coffee Morning

Sat 14th 10:30am - 12:30pm - General Financial Guidance

Tues 24th - Fri 27th - Children's Halloween Activities

Thurs 26th 19:00pm - 21:00pm - Stratton History Group

Sat 28th 10:30am - 13:00pm - Lego Challenge



Regular Free Activities & Groups

Tues	13:30 - 15:30	Fun Art Group
Wed	10:00 - 12:00	Friendship Group
	14:00 - 16:00	Tea and Tech
Thurs	10:30 - 11:15	Toddler Storytime
	10:30 - 12:30	Stratton Advice Point
	13:30 - 15:30	Bereavement Group
	16:15 - 18:30	Family History Research
Fri	11:00 - 12:30	Knit, Sew & Natter Group
Sat	10:30 - 13:30	Chess Club & Board Games
Sat	11:00 - 11:45	* Saturday Story Time



*Saturday 7th & 21st October

Friends Coffee Morning!

Saturday 7th October
From 10:30am

Home-made cakes,
drinks, live music
and a raffle!

Come and join us for
coffee and cakes!

Book/DVD
Sale!

Where?!
Beechcroft Library
Upper Stratton
SN2 7QQ

FUNDRAISING FOR
**MACMILLAN
CANCER SUPPORT**

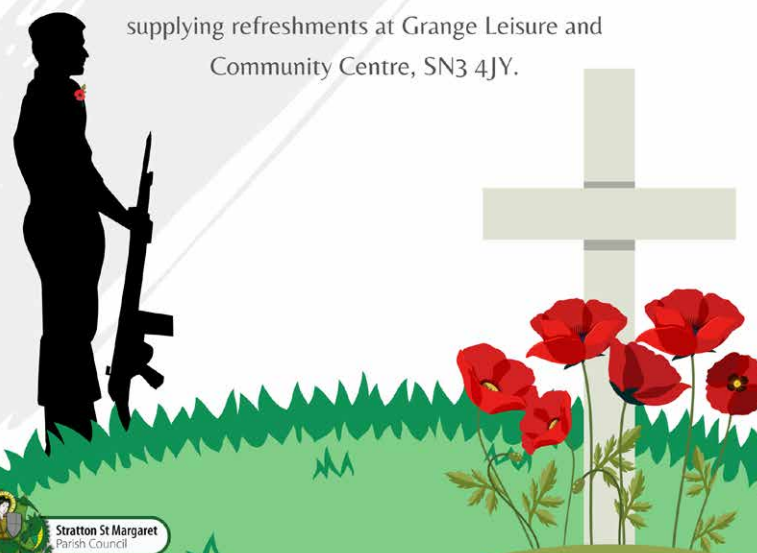
REMEMBRANCE DAY

Lest We Forget

SUNDAY 12TH NOVEMBER AT 3PM



Stratton St Margaret Parish Council would like to invite residents to join our Remembrance Sunday Service on Sunday the 12th of November at 3pm at the Peace Memorial (on the corner of Grange Drive and Ermin Street). Afterwards we will be supplying refreshments at Grange Leisure and Community Centre, SN3 4JY.



Youth Halloween Party



Disco Dome | Games | Snacks



31
October 2023

AGES 10 - 14

Meadowcroft Community Centre
3.30pm - 5.30pm

**Free
Entry**

For more info contact
cherry.riley@strattonstmargaret.gov.uk

Stratton's Wellness Day Event



Yoga Sessions

Food & Drink
Stalls

Nutritionists

Spiritual
Readers

Craft Stalls

...and many more!

Saturday 18th November 2023

10am - 4pm

At Meadowcroft
Community Centre SN2 7QX
& Beechcroft Library SN2 7QQ!

For More Info, Please Contact Us At:
01793 823761
info@strattonstmargaret.gov.uk

What's on

Upcoming Events

Stratton St Margaret Parish Council hosts a variety of public events throughout the year ranging from festivals, to commemoration events.

Over the coming Autumn months we have a Halloween Party, our annual remembrance service, and a community wellness day!

Saturday 7th October- Coffee Morning

Come down to Beechcroft Library from 10:30am for a community coffee morning and enjoy cakes, drinks, live music and a book sale!

Tuesday 31st Oct - Halloween Party!

For ages 10-14, come down to Meadowcroft from 3:30pm for a free Halloween celebration! Enjoy a disco dome, party games & snacks!

Sunday 12th Nov - Remembrance Day Service

Join us at 3pm at the Peace Memorial in Stratton to pay our respects and remember those we have lost.

Saturday 18th Nov - Stratton Wellness Day

In honour of annual national event 'Self Care Week' (13th-19th November 2023) SSMPC is hosting a Wellness Day for the Stratton community to raise awareness of ways to improve our physical health and mental wellbeing. The event is being held between Meadowcroft Community Centre Hall (SN2 7JX) and Beechcroft Library (SN2 7QQ) from 10am to 4pm.

A range of businesses will be showcased to help boost people's mental and physical well-being during this day event. Enjoy yoga sessions, nutrition and spiritual healer talks, a range of stalls, including food and drinks and much more!

Please get in touch if you would like to get involved (£10 fee per stall holder, 100% of this fee is donated to the Chairman's Charity, Prospect Hospice).



Meet Derrek the Dragon!

MEADOWCROFT COMMUNITY CENTRE GROUPS:



Youth Club throughout the week
Contact Youth Worker Cherry on
cherry.riley@strattonstmargaret.gov.uk

Swing Out Swindon
- Tuesdays 7:30-8:30pm

Thursday Club (7th&21st)
- Thursdays 1-3:30pm

U3A Dressmaking Group (14th&28th)
- Thursdays 1-4pm

U3A Discussion Group
- Friday 8th 2-4pm

Singing for Fun
- Tuesday 19th 10am-12pm

Carers Cuppa
- Monday 25th 1:15-3pm

Open Minds
- Wednesday 27th 1:15-3pm

Did you know of this
Baby and Toddler Group?

St Margaret's Centre
SN3 4NY
Wednesday and Friday's
10-11:30am

REGULAR
ACTIVITIES AT
BEEHCROFT
LIBRARY!



STRATTON COMMUNITY GROUPS:

WEEKLY FREE
COMMUNITY CAFE'S
HELD AT
MEADOWCROFT
COMMUNITY CENTRE:



BREAKFAST CLUB!



Every Monday morning from 7am until 8:30am we have a Breakfast Club providing cereals, toast, sweet treats, fruit and drinks, for parents and children of all school ages



STRATTON COMMUNITY CAFE!

Every Friday morning from 10am until 12pm we have a Community Cafe which you can chat with your neighbours and housing officers from Swindon Borough Council, over a cup of tea, coffee and biscuits, and take home surplus food from local supermarkets



Local News

Stratton Festival



What a great turn out for our Stratton Festival back in July! We hope everyone had a wonderful day - The rain didn't spoil the fun!

We want to thank everyone who took part & made donations to our Chairman's Charity (Prospect Hospice). A massive thank you is also due to our fabulous team who spent months planning & organising the event.

We hope to host this event again next year so keep an eye on our social media for updates!



Prospect Hospice Volunteering Day

Staff from Stratton St Margaret Parish Council's office, library and the grounds team volunteered at Prospect Hospice (Moormead Road, Wroughton SN4 9BY) on Thursday 14th September.

Their day covered activities such as upkeeping general plant maintenance and weeding, cutting of large hedges/bushes as well as painting and staining residential buildings within the Hospice gardens. A small group of our staff also helped out at Ramsbury House in the morning, picking and collecting apples which Prospect Hospice use for their cooking!

With Prospect Hospice being our chosen Chairman's charity, we are so grateful to be able to help out with this amazing charity and organisation. Many Thanks to Prospect Hospice from everyone at Stratton St Margaret Parish Council!



Toddler Group

Did you know Beechcroft Library have a Toddler Story

Time every Thursday from 10.30am, as well as a Saturday Story Time on the first and third Saturday of the month from 11am! These sessions are all suitable for age 7 and under. They are free events and there is no need to book. For further details please contact us: beechcroft.library@strattonstmargaret.gov.uk or 01793680030.



Parish Developments

After many years of planning, campaigning and designing, Meadowcroft Skatepark is now complete and was officially opened on the 13th of July!

Our youth club are taking pride in this newly upgraded space by litter picking around Meadowcroft regularly!

The skatepark is already being used frequently and safely and we can't wait to see lots of people enjoy this new section added to Meadowcroft for years to come.

Although SSMPC organised and paid for the skatepark, we received a kind donation that covered 8% of the cost from Hills Waste Management through the Landfill Communities Fund. This grant is managed by Community First, Wiltshire.

We would like to thank Hills Waste for their grant helping make this project possible!



Delamere Drive Park

Delamere Drive Park is almost complete. Not a small project as it has cost £60,000.

The newly featured crocodile will feature here, which we're sure many families will enjoy! Fencing around the whole play area will soon be added, but this space is open to the public!



Fairy Trail

We have recently installed an outdoor fairy trail in Stratton! We hope that this will encourage residents to explore our local area and spend some time outdoors this autumn & winter.

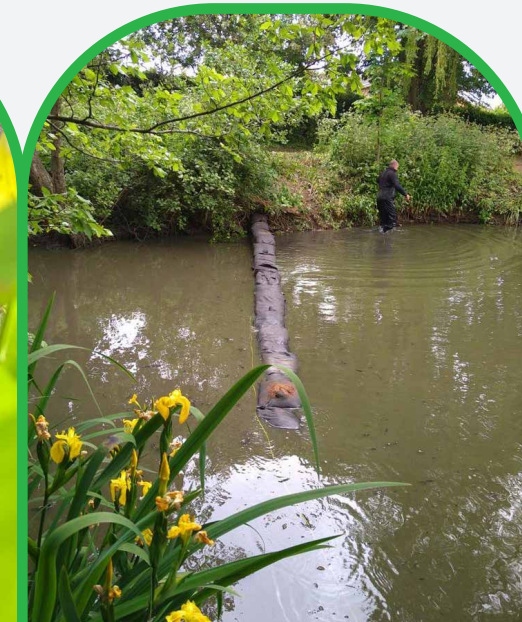
Head to the play park next to Grange Leisure to find some fairies!



Claridges Pond

We are slowly building an eco section at Claridges Pond which is due to be completed very soon!

This will help encourage dragonflies and other insects to thrive in this area as well as protecting the species that live here.



Greenbridge Underpass Mural

A mural dedicated to Stratton, past and present, has been painted onto the Greenbridge Underpass. Not only does this brighten the area but it also educates about the history of our parish!

The mural begins with a Roman soldier walking along a path from which Stratton was named (strata = Latin for paved street) and continues with historic icons and moments in time to tell the story of Stratton all the way up to the present day where a Honda & Mini have been depicted to represent the local vehicle manufacturing businesses and finishes with the brand new Stratton skate park!



MEADOWCROFT
SKATEPARK



Local News

Stratton Police



Anti-Social behaviour, has been a problem that has been one of our focuses for the Stratton area due to the expected rise in the summer months. We have looked to prevent and tackle this in many ways. It does appear to have had a positive impact and reduced the amount of concern within the community and There will be a combination of reasons for this:

1. An increase in youth provisions from the Parish. We were invited along to a community event with the children that visit youth club. We were able to interact with them in a more relaxed environment, breaking down barriers and for children to see us as someone who can help.



Community Speed Watch

We are looking to set up a community speed watch for the Hyde Road area of Stratton. After campaigning with partner agencies we have managed to collect data that indicates there is a problem in this location. So we would like to ask for volunteers to be trained to use the equipment and be a part of a team to help reduce and hopefully eliminate the problem. This will help make Stratton that little bit safer.



What else has been happening? These last few weeks we have been receiving intel to suggest that there are unknown persons trying car/van door handles. We urge those effected to report online or via 101 or 999 if a crime in progress. Even if it is just to pass on information. It helps build a larger picture of what's going on so we can respond accordingly with the right resources.

We have been out in marked vehicles and on foot patrol at key times and in key locations. We have also tried to offer crime prevention via social media, in areas affected by speaking with some local companies to spread the word on crime prevention and what can be done.

Local News

GRANGE LEISURE AND COMMUNITY CENTRE

Our friendly and welcoming gym is the perfect place to get fit. It offers modern equipment, and our staff are always on hand to help.

Group Exercise Classes for EVERYONE

Here at The Grange, we've got a range of group exercise classes to suit everyone. Whether you're looking to lose weight, get toned up, improve your fitness levels, get more flexible, or just get back into getting active after a long layoff, we've got the right class for you.

Contact 01793 825525 to inquire about a trial 3 day guest pass so you can try our classes.

Ever thought about joining a Nutrition course?

We offer a special discount to ALL members, PLUS all members are entitled to a FREE personal trial.

This is not about going on a diet, instead the courses provide the skills and support to better understand your own body and how simple changes can build up to make a big difference.

Come down to the Leisure Centre and try out our NEW Boditrax equipment.

Boditrax will help you understand more about your body, where your strengths and weaknesses lie, and what you can do to improve your health, fitness and general wellbeing. Putting you in control of the future of your fitness.



Boditrax

All information is delivered in a positive, informative and empowering way. There is a pre and post course questionnaire to complete to help you to see the health improvements you have made whilst attending the course.

If you are working with a GP or taking any medication, we will ensure everything discussed is safe and relevant for you.



Autumn Activities



H O H A R V E S T D U Z H P S G J P
 T I O P A L C V K E P U M P K I N L
 S B B R W F H O C I P L F N V H O A
 G Q Z E A V R A N F T W W X C R P B
 E A U G R N G O L K K C S T E S I L
 A U P I K N G K S L E F O A W E N U
 C T C P R E A E E T O R N Q H A E S
 O U O B L R S T A V Y W S C F S C T
 R M Z I Z E E N I E W I E J W O O E
 N N Y O B A S L K O M E S E L N N R
 G L E A V E S O W L N C R X N S E Y
 Y I Z F N W Y J B D W N T T E U N Y

ACORN APPLES AUTUMN BLUSTERY CONKER COZY FROSTY
 HALLOWEEN HARVEST HIBERNATION LEAVES ORANGE OWL
 PINECONE PUMPKIN SEASONS SQUIRREL



FAQ's

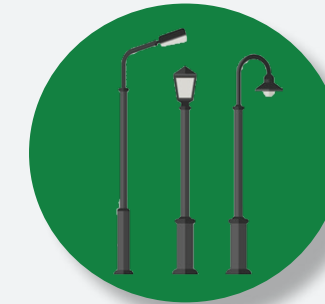


Can you cut the grass outside my house?

SSMPC mow all of the grass on the land we own every 3 weeks from March to October. Please get in touch to find out if the grass is our responsibility.

Can you fix the broken street light on my road?

Swindon Borough Council is responsible for all of the lighting across Swindon. Head to their website to report a faulty or damaged light (swindon.gov.uk)



What time does the Youth Club run?

Our Youth Club is on Tuesday, Wednesday and Thursday evenings as well as our new breakfast club on a Monday morning (see page 11 for more info).

How can I apply for a community grant?

Applications open twice a year, May and September. Head to our website for an application form and t&c's (strattonstmargaret.gov.uk/community-grants)



Can I rent an allotment in Stratton?

To rent one of our allotments you must be a resident of the Parish. To enquire about renting please email us with your full name, address & preferred site.

Can I buy a burial plot in Stratton?
 SSMPC owns 2 cemetery sites, Green Road and St Margarets. You must live within the parish to purchase a plot as grave spaces are limited and residents take priority.



Did you know?

'The Chairmans Charity' each year SSMPC's current chairman selects a local charity to support which the council donates funds raised from community events! This year we are supporting Prospect Hospice.

Arkell's was established by John Arkell 180 years ago and is Swindon's oldest business, handed down through the generations!

Every Friday at Meadowcroft Community Centre we host a FREE community cafe from 10am-12pm where residents can enjoy tea, coffee and snacks.

Stratton derives its name from the Latin, strata (meaning a paved way or street) after the Roman road which runs straight through the parish from south east to north west.

In the past, the people of Stratton were commonly known as 'crocodiles'. The name came from a local story that some Stratton men once armed themselves against a supposed crocodile found at the side of a road.

2023 Meetings

Date	Event	Start
September		
6th	Youth	7pm
13th	Planning	7pm
20th	Personnel	7pm
27th	Full Council	7pm
October		
11th	Planning	7pm
18th	Finance	7pm
25th	Property	7pm
November		
15th	Open Spaces	7pm
22nd	Planning	7pm
29th	Full Council	7pm

Date	Event	Start
December		
6th	Personnel	7pm
13th	Finance	7pm
20th	Planning	7pm
January		
3rd	Youth	7pm
10th	Full Council	7pm
17th	Planning	7pm
24th	Property	7pm
February		
7th	Open Spaces	7pm
14th	Planning	7pm

Useful Numbers



@ssmpcswindon



@ssmpcswindon

Beechcroft Library	01793 680030
BEST Trust	01793 200124
Community Centre	01793 823761
Drove Vets	01793 821821
Grange Leisure	01793 825525
Great Western Hospital	01793 604020
Merchiston Surgery	01793 823307
Open Spaces	01793 823761
SSM Womens Institute	01793 829900
St Margarets Church	01793 826505
Stratton Parish Council	01793 823761
Swindon Carers	01793 531133
Swindon Mind	01793 432031
Swindon Sexual Health	01793 604038
The Pest Controller	07557 023940

Co-op Funeral Service	01793 539432
Hillier Funeral Service	01793 522797
Pearce Funeral Service	01793 832072
G&L Evans Funerals	01793 237852
Franklin Memorials	01793 766715
AE Smith Funerals	01793 237885
Kingsdown Crematorium	01793 822259

Beechcroft Infants	01793 823278
Colebrook Infants	01793 331960
Colebrook Junior	01793 823057
Grange Infants	01793 823278
Grange Junior	01793 823278
Kingsdown	01793 822284
Ruskin Junior	01793 332107
St Catherines Primary	01793 822699
St Lukes Academy	01793 705566
St Phillips Pre School	01793 705769



Local Contacts

